

## JADE

### Technical Specifications

**Composition:** 94% POLYESTER, 6% RECYCLED COTTON

**Width:** 140 cm. UNE EN 1773

**Weight m2:** 466 gr/m2

**Tear resistance:** >20N (BS4303) – >3 (DIN 53859-5)

**Tensile strength:** >350N (ISO13934-1)

**Seam slippage:** <4 (BS 3320) – <6 (DIN53868)

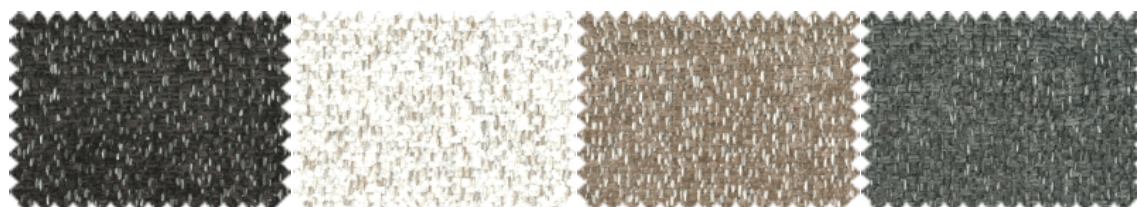
**Abrasion resistance:** 70,000 cycles UNE EN ISO 12947

**Pilling resistance:** 4-5 no pilling (ISO DIS 12945-2)

**Color fastness to rubbing:** 4-5 good (ISO 105-X12)

**Color fastness to light:** 4-5 good (ISO 105-B02)



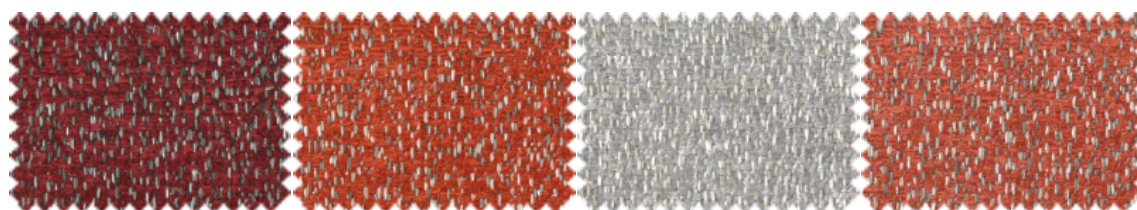


JADE\_10

JADE\_100

JADE\_248

JADE\_271

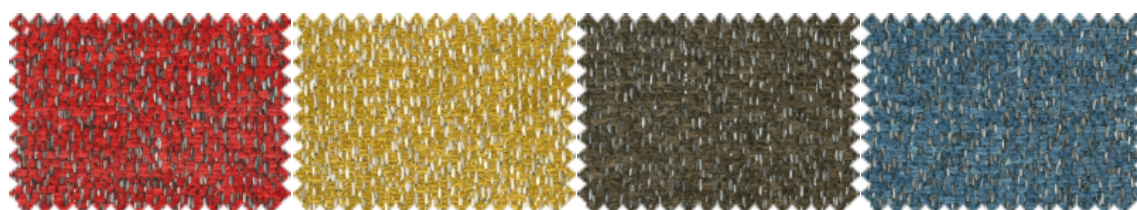


JADE\_28

JADE\_30

JADE\_300

JADE\_305

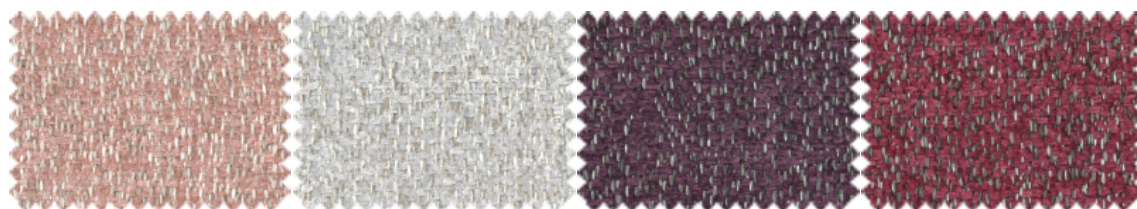


JADE\_309

JADE\_314

JADE\_32

JADE\_321

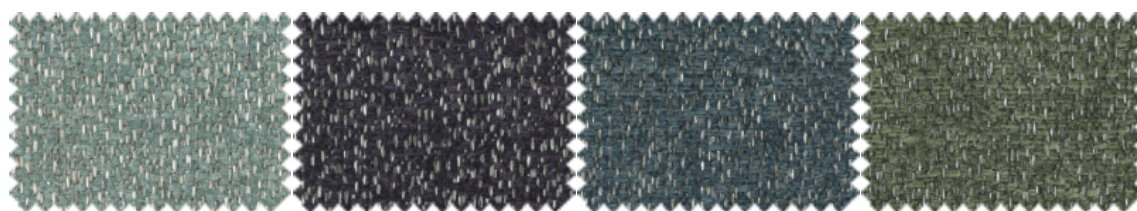


JADE\_324

JADE\_336

JADE\_341

JADE\_342



JADE\_347

JADE\_348

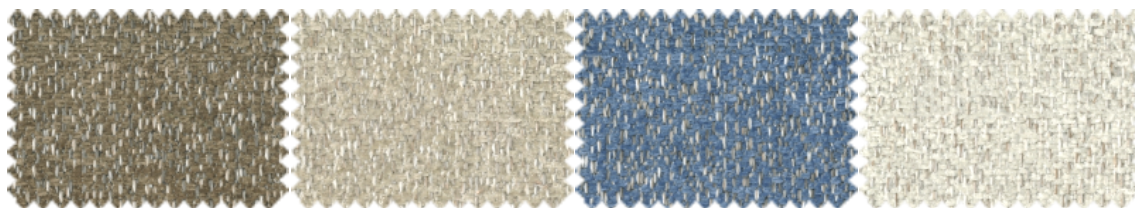
JADE\_395

JADE\_407

# aquaclean<sup>®</sup>

fabrics for living

---

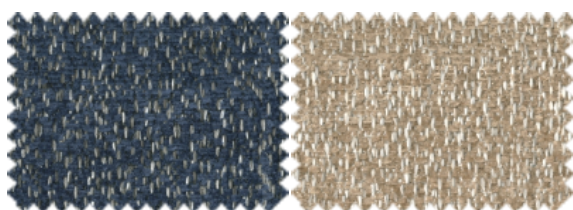


JADE\_430

JADE\_51

JADE\_53

JADE\_56



JADE\_60

JADE\_90

---

MADE IN SPAIN

| [aquaclean.com](http://aquaclean.com)





The color of the displayed images may not correspond to the final product. Please consult your furniture store.

## maintenance

For normal sofa maintenance we recommend that you vacuum the entire surface area regularly. You can use a normal home vacuum cleaner with a brush fitting.

## water cleaning in three simple steps

**Aquaclean<sup>®</sup>** Technology enables you to get rid of small stains such as wine, coffee, food and even most marker pens without having to wash with soap or detergent.



Read the QR to find out more about the Aquaclean<sup>®</sup> cleaning method.

- 1 Remove any excess residue from your upholstery.
- 2 Apply water\* over the stain, either directly or using a damp cloth, then wait a few seconds.
- 3 Finally, press down with the damp cloth and rub gently over the fabric in circular movements. If the stain does not come off completely (*especially dried in stains*) repeat the process as required.

\*To avoid potential limescale stains, it is preferable use bottled water.

## washing instructions

For normal care, you don't need to remove and wash the sofa fabric. But for large or tough stains, before washing review the following instructions:

## maintenance and cleaning

### liquids or oils

Absorb the excess liquid or oil with a cloth or paper towel, then rub gently with circular movements.

### grease, pen ink

Apply water over the stain, either directly or using a damp cloth, leave on the fabric for a few seconds, then rub the stain gently with circular movements. Repeat the process as many times as necessary. Always leave the fabric to dry.

### dust

Remove the dust with a vacuum cleaner.



Thanks to SafeFront<sup>®</sup> technology, our fabrics are protected against viruses and bacteria. They have been proven to reduce viral activity by over 91% after two hours of continuous contact.