

SERENA

Tekniset ominaisuudet

Koostumus: 75% KIERRÄTETTYÄ POLYESTERIÄ, 20% POLYESTERIÄ, 5% POLYAMIDIA.

Leveys: 140 cm. UNE EN 1773

Paino m2: 507 gr/m2

Repimislujuus: >20N (BS4303) – >3 (DIN 53859-5).

Vetolujuus: >(ISO13934-1)

Sauman siirtymä: < < 6 (DIN53868).

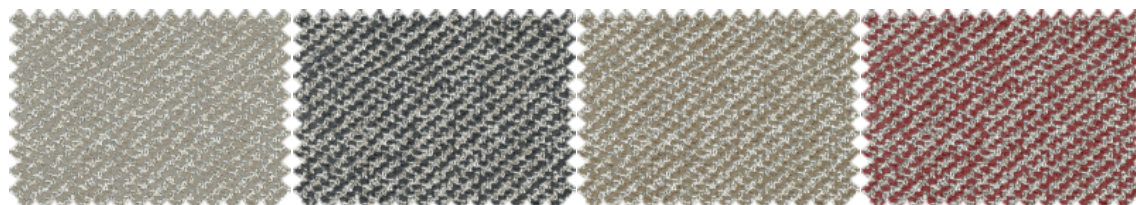
Kulutuskkestävyys: UNE EN ISO 12947 EN ISO 12947

Pillingin kestävyys: (ISO DIS 12945-2): 4-5 (max. 5) ei pillingiä (ISO DIS 12945-2).

Väriaineen hankauskestävyys: 5 (5 max) hyvä (ISO 105-X12)

Väriin valonkestävyys: 5 hyvä (ISO 105-B02)



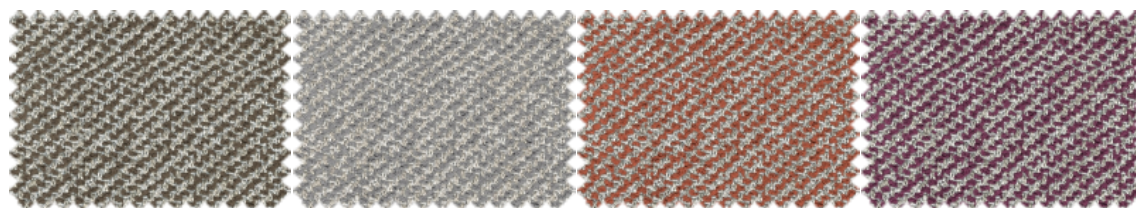


SERENA_109

SERENA_110

SERENA_111

SERENA_1266

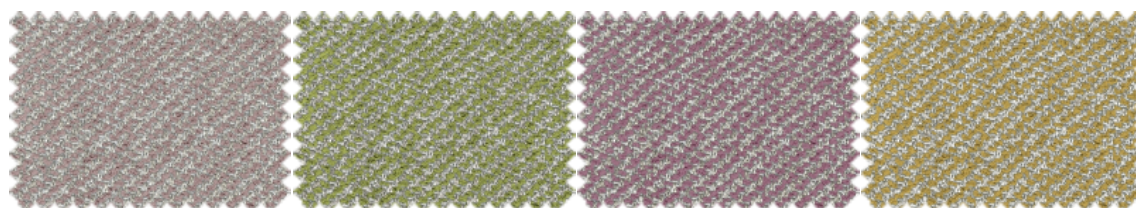


SERENA_127

SERENA_1271

SERENA_130

SERENA_1302

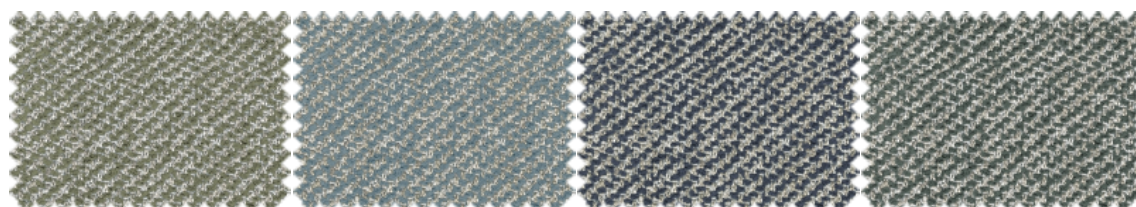


SERENA_1324

SERENA_1330

SERENA_1342

SERENA_1357

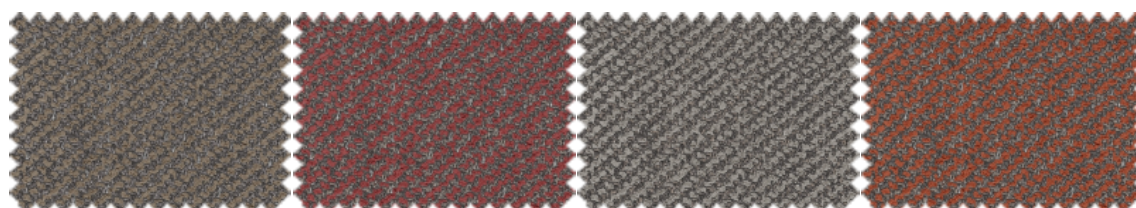


SERENA_1407

SERENA_153

SERENA_160

SERENA_193

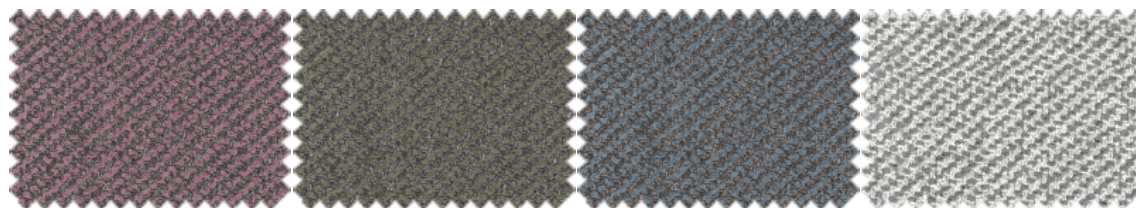


SERENA_211

SERENA_2266

SERENA_2271

SERENA_230

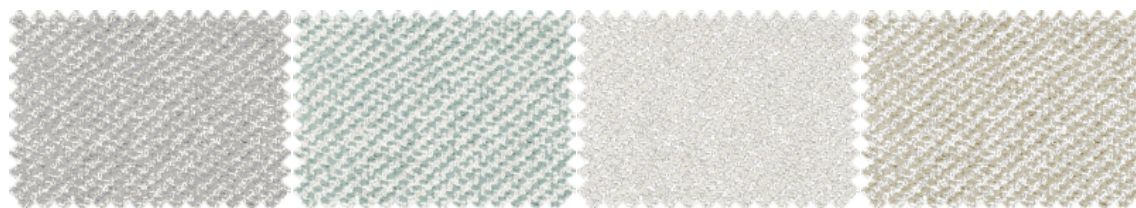


SERENA_2342

SERENA_2407

SERENA_253

SERENA_271



SERENA_300

SERENA_347

SERENA_56

SERENA_90

The color of the displayed images may not correspond to the final product. Please consult your furniture store.

maintenance

For normal sofa maintenance we recommend that you vacuum the entire surface area regularly. You can use a normal home vacuum cleaner with a brush fitting.

water cleaning in three simple steps

Aquaclean[®] Technology enables you to get rid of small stains such as wine, coffee, food and even most marker pens without having to wash with soap or detergent.



Read the QR to find out more about the Aquaclean[®] cleaning method.

- 1 Remove any excess residue from your upholstery.
- 2 Apply water* over the stain, either directly or using a damp cloth, then wait a few seconds.
- 3 Finally, press down with the damp cloth and rub gently over the fabric in circular movements. If the stain does not come off completely (*especially dried in stains*) repeat the process as required.

*To avoid potential limescale stains, it is preferable use bottled water.

washing instructions

For normal care, you don't need to remove and wash the sofa fabric. But for large or tough stains, before washing review the following instructions:

maintenance and cleaning

liquids or oils

Absorb the excess liquid or oil with a cloth or paper towel, then rub gently with circular movements.

grease, pen ink

Apply water over the stain, either directly or using a damp cloth, leave on the fabric for a few seconds, then rub the stain gently with circular movements. Repeat the process as many times as necessary. Always leave the fabric to dry.

dust

Remove the dust with a vacuum cleaner.



Thanks to SafeFront[®] technology, our fabrics are protected against viruses and bacteria. They have been proven to reduce viral activity by over 91% after two hours of continuous contact.