

## SERENA

### Tehniške karakteristike

**Sastav:** 75% RECIKLIRAN POLIESTER, 20% POLIESTER, 5% POLIAMIDA

**Širina:** 140 cm. UNE 1773. GODINE

**Težina m2:** 507 gr/m2

**Otpornost na habanje:** > 20N (BS4303) -> 3 (DIN 53859-5)

**Vlažna vrsto?** > 350 N (ISO13934-1)

**Pomak šava:** < 4 (BS 3320) -< 6 (DIN53868)

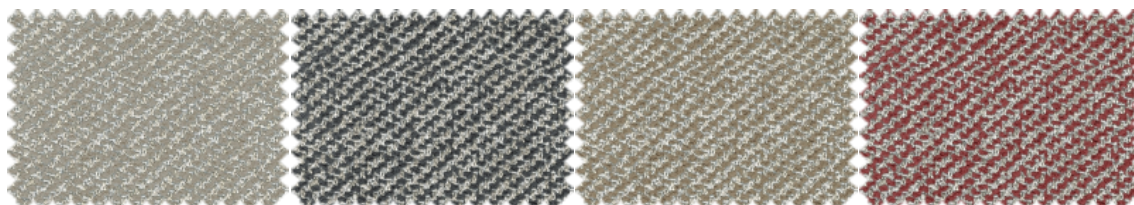
**Otpornost na habanje:** 90 000 ciklusa UNE EN ISO 12947

**Otpornost na grudanje:** 4-5 (maks. 5) bez grudanja (ISO DIS 12945-2)

**Otpornost na boje pri trljanju:** 5 (maks. 5) dobro (ISO 105-X12)

**Postojanost tinktura na svjetlost:** 5 dobra (ISO 105-B02)



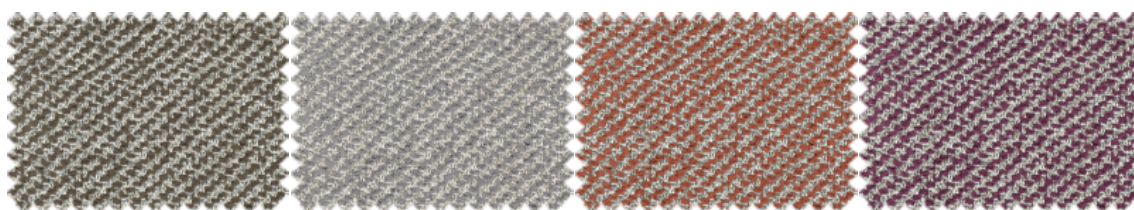


SERENA\_109

SERENA\_110

SERENA\_111

SERENA\_1266

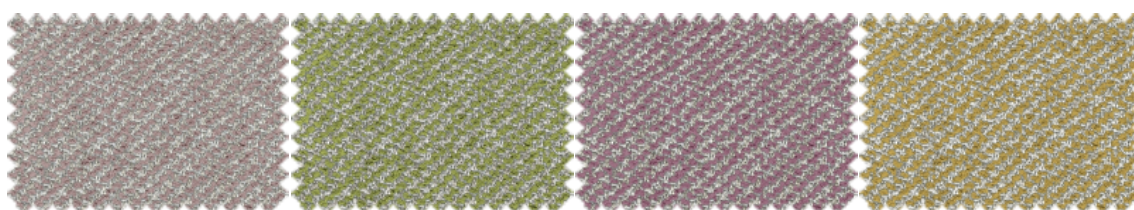


SERENA\_127

SERENA\_1271

SERENA\_130

SERENA\_1302

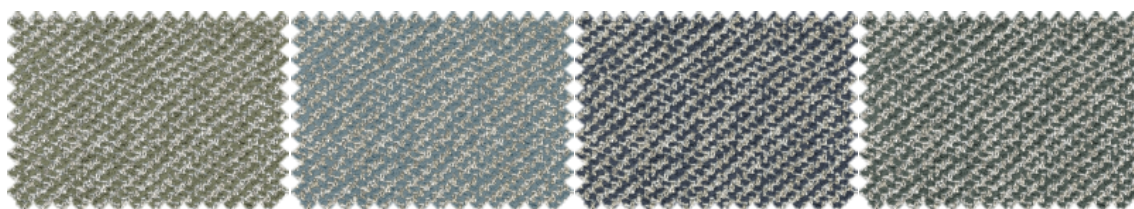


SERENA\_1324

SERENA\_1330

SERENA\_1342

SERENA\_1357

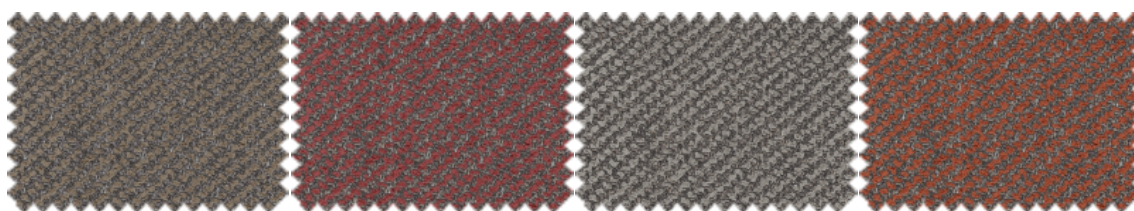


SERENA\_1407

SERENA\_153

SERENA\_160

SERENA\_193



SERENA\_211

SERENA\_2266

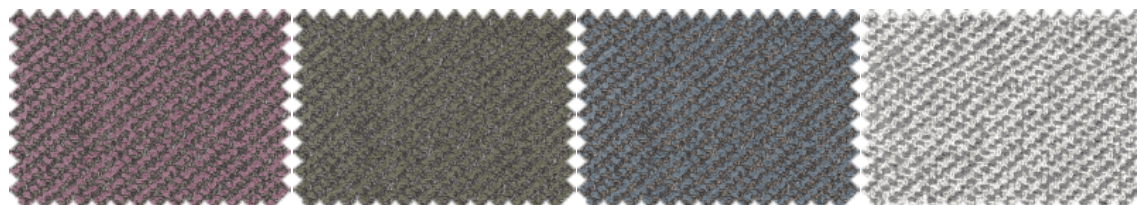
SERENA\_2271

SERENA\_230

# aquaclean<sup>®</sup>

fabrics for living

---

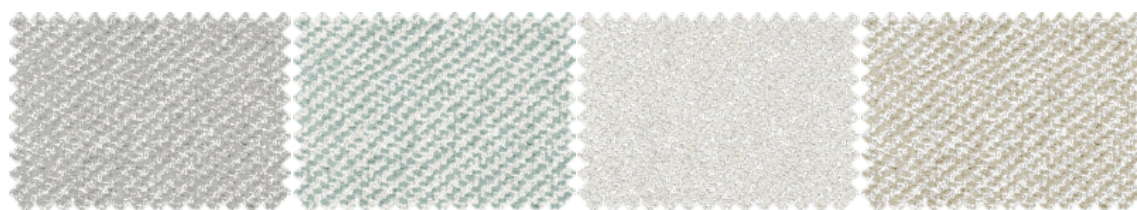


SERENA\_2342

SERENA\_2407

SERENA\_253

SERENA\_271



SERENA\_300

SERENA\_347

SERENA\_56

SERENA\_90

---

MADE IN SPAIN

[aquaclean.com](http://aquaclean.com)



The color of the displayed images may not correspond to the final product. Please consult your furniture store.

## maintenance

For normal sofa maintenance we recommend that you vacuum the entire surface area regularly. You can use a normal home vacuum cleaner with a brush fitting.

## water cleaning in three simple steps

**Aquaclean<sup>®</sup>** Technology enables you to get rid of small stains such as wine, coffee, food and even most marker pens without having to wash with soap or detergent.



Read the QR to find out more about the Aquaclean<sup>®</sup> cleaning method.

- 1 Remove any excess residue from your upholstery.
- 2 Apply water\* over the stain, either directly or using a damp cloth, then wait a few seconds.
- 3 Finally, press down with the damp cloth and rub gently over the fabric in circular movements. If the stain does not come off completely (*especially dried in stains*) repeat the process as required.

\*To avoid potential limescale stains, it is preferable use bottled water.

## washing instructions

For normal care, you don't need to remove and wash the sofa fabric. But for large or tough stains, before washing review the following instructions:

## maintenance and cleaning

### liquids or oils

Absorb the excess liquid or oil with a cloth or paper towel, then rub gently with circular movements.

### grease, pen ink

Apply water over the stain, either directly or using a damp cloth, leave on the fabric for a few seconds, then rub the stain gently with circular movements. Repeat the process as many times as necessary. Always leave the fabric to dry.

### dust

Remove the dust with a vacuum cleaner.



Thanks to SafeFront<sup>®</sup> technology, our fabrics are protected against viruses and bacteria. They have been proven to reduce viral activity by over 91% after two hours of continuous contact.