

WILLOW

Technické vlastnosti

Složení: SLOŽENÍ: 75% RECYKLOVANÝ POLYESTER, 20% POLYESTER, 5% POLYAMID.

Šířka: 140 cm. UNE EN 1773

Hmotnost m2: 531 gr/m2

Pevnost při trhání: >20N (BS4303) – >3 (DIN 53859-5)

Pevnost v tahu: >350N (ISO13934-1)

Posunutí švu: <4 (BS 3320) – <6 (DIN53868)

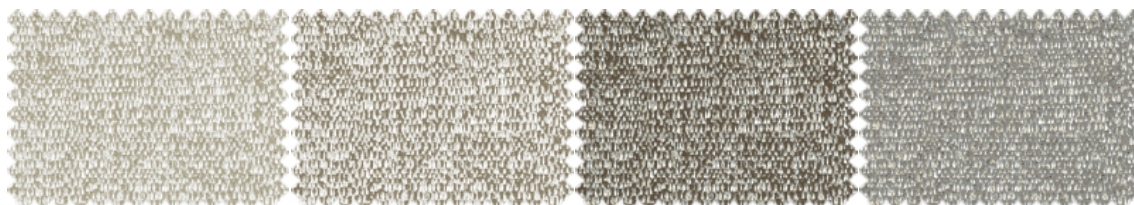
Odolnost proti oděru: >60 000 cyklů UNE EN ISO 12947

Odolnost proti žmolování: (max. 5) bez žmolování (ISO DIS 12945-2)

Odolnost barvy vzhledem k tření: 5 dobrá (ISO 105-X12)

Stálost barev na světle: 7 dobrá (ISO 105-B02)



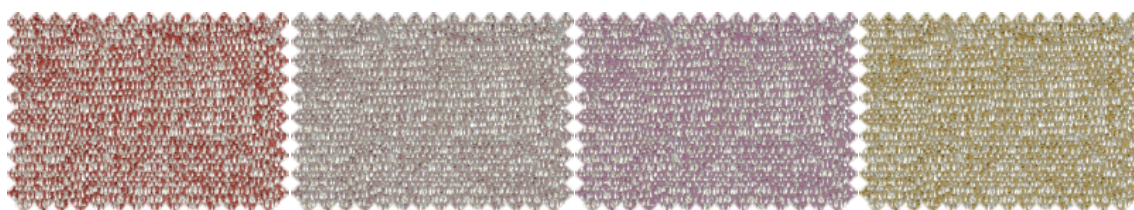


WILLOW_109

WILLOW_111

WILLOW_127

WILLOW_1271

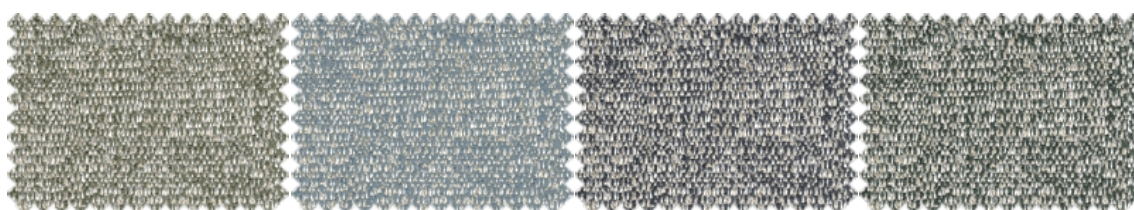


WILLOW_130

WILLOW_1324

WILLOW_1342

WILLOW_1357

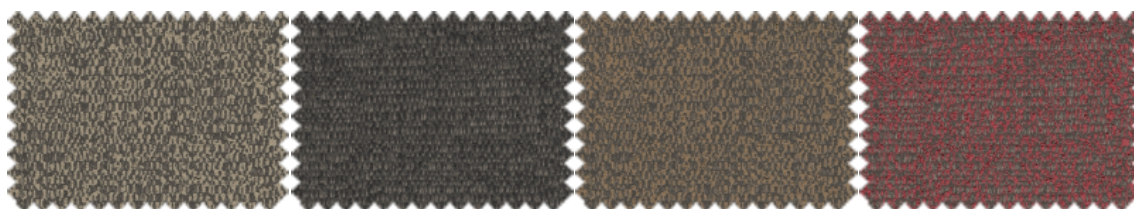


WILLOW_1407

WILLOW_153

WILLOW_160

WILLOW_193

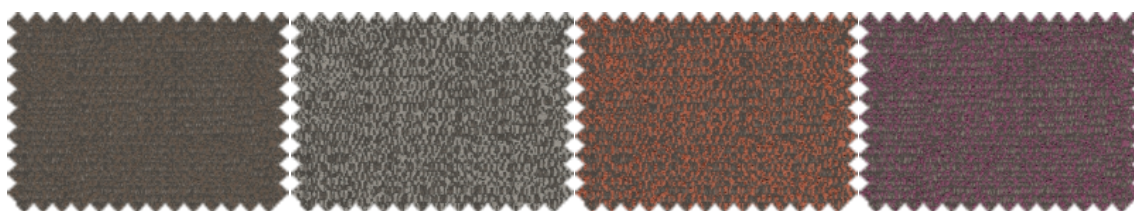


WILLOW_209

WILLOW_210

WILLOW_211

WILLOW_2266

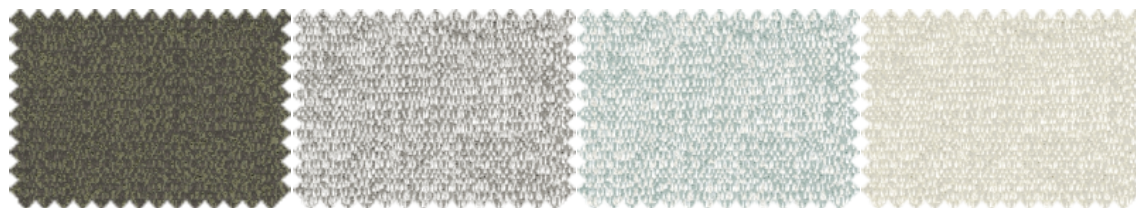


WILLOW_227

WILLOW_2271

WILLOW_230

WILLOW_2302

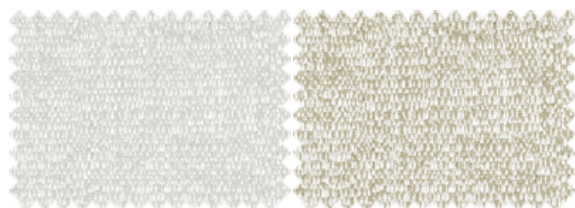


WILLOW_2407

WILLOW_300

WILLOW_347

WILLOW_51



WILLOW_56

WILLOW_90

The color of the displayed images may not correspond to the final product. Please consult your furniture store.

maintenance

For normal sofa maintenance we recommend that you vacuum the entire surface area regularly. You can use a normal home vacuum cleaner with a brush fitting.

water cleaning in three simple steps

Aquaclean[®] Technology enables you to get rid of small stains such as wine, coffee, food and even most marker pens without having to wash with soap or detergent.



Read the QR to find out more about the Aquaclean[®] cleaning method.

- 1 Remove any excess residue from your upholstery.
- 2 Apply water* over the stain, either directly or using a damp cloth, then wait a few seconds.
- 3 Finally, press down with the damp cloth and rub gently over the fabric in circular movements. If the stain does not come off completely (*especially dried in stains*) repeat the process as required.

*To avoid potential limescale stains, it is preferable use bottled water.

washing instructions

For normal care, you don't need to remove and wash the sofa fabric. But for large or tough stains, before washing review the following instructions:

maintenance and cleaning

liquids or oils

Absorb the excess liquid or oil with a cloth or paper towel, then rub gently with circular movements.

grease, pen ink

Apply water over the stain, either directly or using a damp cloth, leave on the fabric for a few seconds, then rub the stain gently with circular movements. Repeat the process as many times as necessary. Always leave the fabric to dry.

dust

Remove the dust with a vacuum cleaner.



Thanks to SafeFront[®] technology, our fabrics are protected against viruses and bacteria. They have been proven to reduce viral activity by over 91% after two hours of continuous contact.